

PPV

Piston Purge Valve

Type PPV / PPV-S

- for liquid and highly viscous media
- for polymerizing and crystallizing media
- sampling volume: variable
- standard bottle volume: VF min 100 ml / VF max 250 ml, other sizes on request

PN 10-40; Class 150 - 300

Temperature: -40 to 220°C



Design characteristics

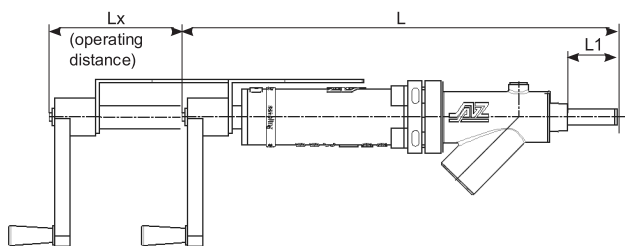
- no dead spaces
- self cleaning plunger
- non-clogging design
- crust breaking
- residue eliminated
- connection: NPT threaded or flanged
- installation: standard 45°, horizontal or vertical

Options

- heating jacket
- purging device

- needle system
- bottle holder for hot media
- automated (pneumatic / electric actuator)
- protection box
- lockable
- special materials

Dimensions



| Type | L | L1 | Lx |
|--------|-------|-------|-------|
| [mm] | [mm] | [mm] | [mm] |
| PPV | 300 | - | 60 |
| PPV-SS | 390 | 43 | 105 |
| PPV-S | 480 | 95 | 142 |

Connection: male thread



| | |
|---------------|--------|
| ● Male thread | |
| Type | NPT |
| PPV | R 3/4" |
| PPV-SS | R 3/4" |
| PPV-S | R 3/4" |

other on request

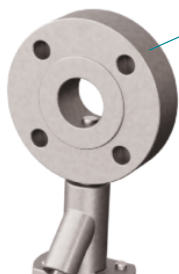
Connection: flange



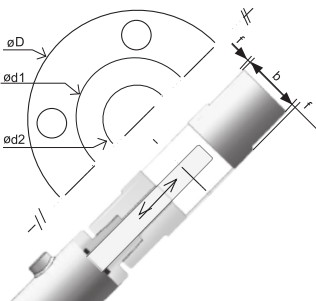
| | |
|----------|-----------------|
| ● Flange | |
| Type | flange sizes |
| PPV | DN15 / NPS 1/2" |
| PPV-SS | DN15 / NPS 1/2" |
| PPV-S | DN15 / NPS 1/2" |

other sizes on request,
dimensions acc. to
ANSI B16.5 / EN 1092-1

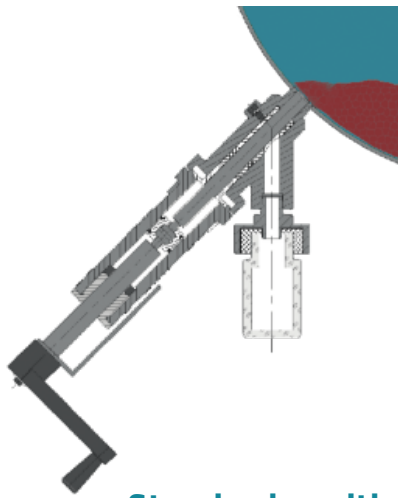
Connection: double flange, only for PPV-SS / PPV-S



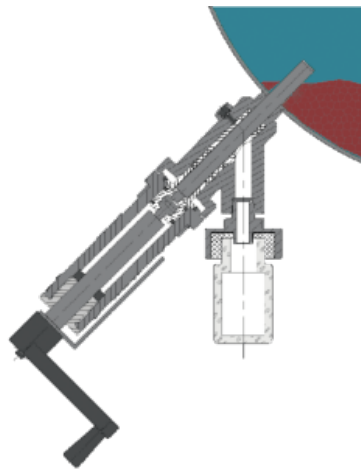
● double flange



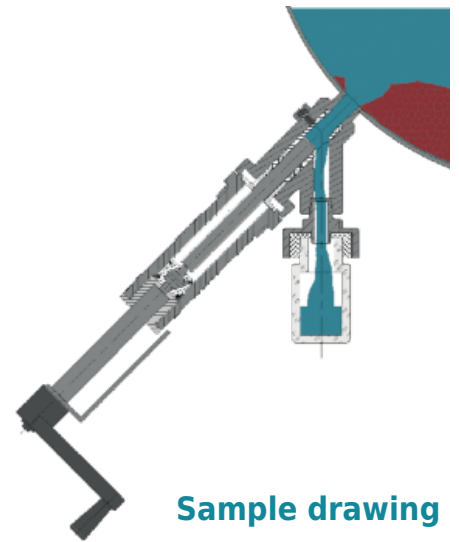
| EN 1092-1 | DN | PN | øD [mm] | d1 [mm] | d2 [mm] | b [mm] | f [mm] | ASME B16.5 / B16.10 | NPS | Class | øD [mm] | d1 [mm] | d2 [mm] | b [mm] | f [mm] | |
|------------------------|-------|---------|------------|------------|------------|-----------|-----------|---------------------|-------|-------|------------|------------|------------|-----------|-----------|----|
| | 25 | 10-40 | 115 | 69 | 25 | 50 | 2 | | 1 | 150 | 110 | 50.8 | 25 | 50 | 2 | |
| | 40 | 10-40 | 150 | 88 | 40 | 50 | 3 | | | 300 | 125 | 50.8 | 25 | 50 | | |
| | 50 | 10-40 | 165 | 102 | 65 | 50 | 3 | | 1½ | 150 | 125 | 73 | 40 | 50 | 2 | |
| | 65 | 10-40 | 185 | 122 | | 50 | 3 | | | 300 | 155 | 73 | 40 | 50 | | |
| | 80 | 10-40 | 200 | 138 | 80 | 50 | 3 | | 2 | 150 | 150 | 92.1 | 50 | 50 | 2 | |
| | 100 | 10-16 | 220 | 158 | 100 | 50 | 3 | | | 300 | 165 | 92.1 | 50 | 50 | | |
| | | 25-40 | 235 | 162 | | 150 | 180 | | 104.8 | 65 | 50 | 2½ | 300 | 190 | 104.8 | 65 |
| | 125 | 10-16 | 250 | 188 | 125 | 50 | 3 | | 3 | 150 | 190 | | 127 | 80 | 50 | 2 |
| | | 25-40 | 270 | 212 | 150 | 50 | 3 | | | 300 | 210 | 127 | 80 | 50 | | |
| 150 | 10-16 | 285 | 212 | 150 | 50 | 3 | 4 | 150 | 230 | 157.2 | 100 | 50 | 2 | | | |
| | 25-40 | 300 | 218 | | 50 | 3 | | 300 | 255 | 157.2 | 100 | 50 | | | | |
| 200 | 10-16 | 340 | 268 | 200 | 50 | 3 | 5 | 150 | 255 | 185.7 | 125 | 50 | 2 | | | |
| | 25/40 | 360/375 | 278/285 | | 50 | 3 | | 300 | 280 | 185.7 | 125 | 50 | | | | |
| other sizes on request | | | | | | | | 6 | 150 | 280 | 215.9 | 150 | 50 | 2 | | |
| | | | | | | | | | 300 | 320 | 215.9 | 150 | 50 | | | |
| | | | | | | | | 8 | 150 | 345 | 269.9 | 200 | 50 | 2 | | |
| | | | | | | | | | 300 | 380 | 269.9 | 200 | 50 | | | |



Standard position



self cleaning



Sample drawing

Materials

Standard

- stainless steel 1.4308, ASTM A351 CF8
- stainless steel 1.4408, ASTM A351 CF8M
- other materials such as Nickel, Hastelloy, Monel, Titanium, Tantalum etc on request

- suitable for automated sampling system
- design optimized for straight travel pneumatic actuator

