

PPV

Piston Purge Valve

Type PPV / PPV-S

- for liquid and highly viscous media
- for polymerizing and crystallizing media
- sampling volume: variable
- standard bottle volume: VF min 100 ml / VF max 250 ml, other sizes on request

PN 10-40; Class 150 – 300

Temperature: -40 to 220°C



Design characteristics

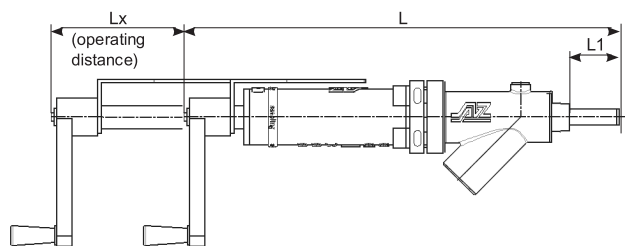
- no dead spaces
- self cleaning plunger
- non-clogging design
- crust breaking
- residue eliminated
- connection: NPT threaded or flanged
- installation: standard 45°, horizontal or vertical

Options

- heating jacket
- purging device
- needle system
- bottle holder for hot media
- automated (pneumatic / electric actuator)
- protection box

- lockable
- special materials

Dimensions



Type	L	L1	Lx
[mm]	[mm]	[mm]	[mm]
PPV	300	-	60
PPV-SS	390	43	105
PPV-S	480	95	142

Connection: male thread



● Male thread	
Type	NPT
PPV	R 3/4"
PPV-SS	R 3/4"
PPV-S	R 3/4"

other on request

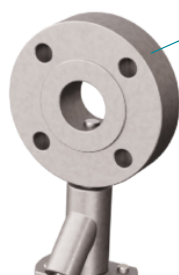
Connection: flange



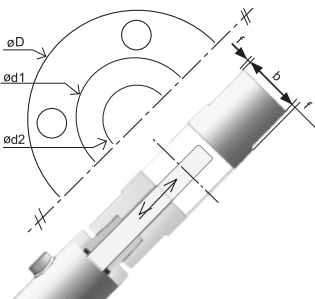
● Flange	
Type	flange sizes
PPV	DN15 / NPS 1/2"
PPV-SS	DN15 / NPS 1/2"
PPV-S	DN15 / NPS 1/2"

other sizes on request,
dimensions acc. to
ANSI B16.5 / EN 1092-1

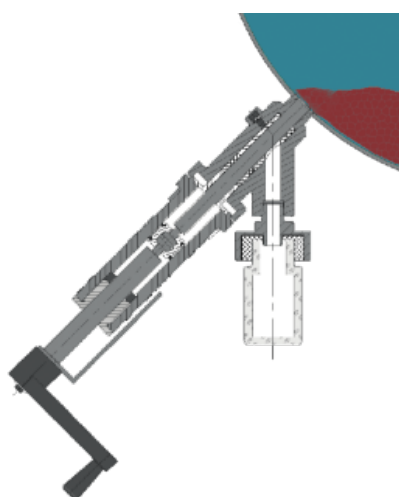
Connection: double flange, only for PPV-SS / PPV-S



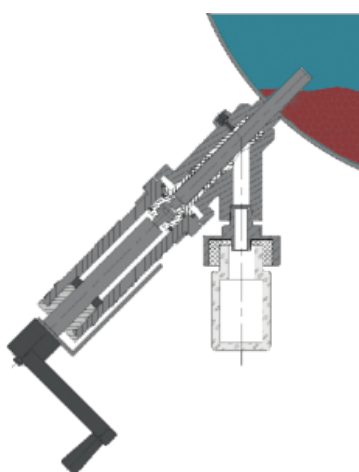
● double flange



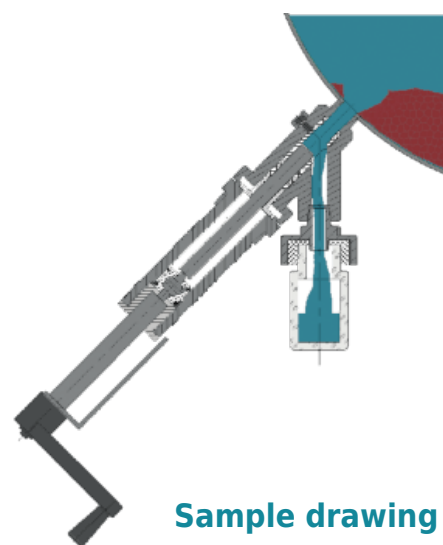
EN 1092-1	DN	PN	øD [mm]	d1 [mm]	d2 [mm]	b [mm]	f [mm]	ASME B16.5 / B16.10	NPS	Class	øD [mm]	d1 [mm]	d2 [mm]	b [mm]	f [mm]
	25	10-40	115	69	25	50	2		1	150	110	50.8	25	50	2
	40	10-40	150	88	40	50	3			300	125	50.8	25	50	
	50	10-40	165	102	65	50	3		1½	150	125	73	40	50	2
	65	10-40	185	122		50	3			300	155	73	40	50	
	80	10-40	200	138	80	50	3		2	150	150	92.1	50	50	2
										300	165	92.1	50	50	
	100	10-16	220	158	100	50	3		2½	150	180	104.8	65	50	2
			235	162						300	190	104.8	65	50	
	125	10-16	250	188	125	50	3		3	150	190	127	80	50	2
			25-40							270	300	210	127	80	
	150	10-16	285	212	150	50	3		4	150	230	157.2	100	50	2
			25-40	300						218	300	255	157.2	100	
200	10-16	340	268	200	50	3	5	150	255	185.7	125	50	2		
		25/40	360/375					278/285	300	280	185.7	125		50	
other sizes on request								6	150	280	215.9	150	50	2	
									300	320	215.9	150	50		
								8	150	345	269.9	200	50	2	
									300	380	269.9	200	50		



Standard position



self cleaning



Sample drawing

Materials

Standard

- stainless steel 1.4308, ASTM A351 CF8
- stainless steel 1.4408, ASTM A351 CF8M
- other materials such as Nickel, Hastelloy, Monel, Titanium, Tantalum etc on request

- suitable for automated sampling system
- design optimized for straight travel pneumatic actuator

